



# SHIPLOC ARCTIC

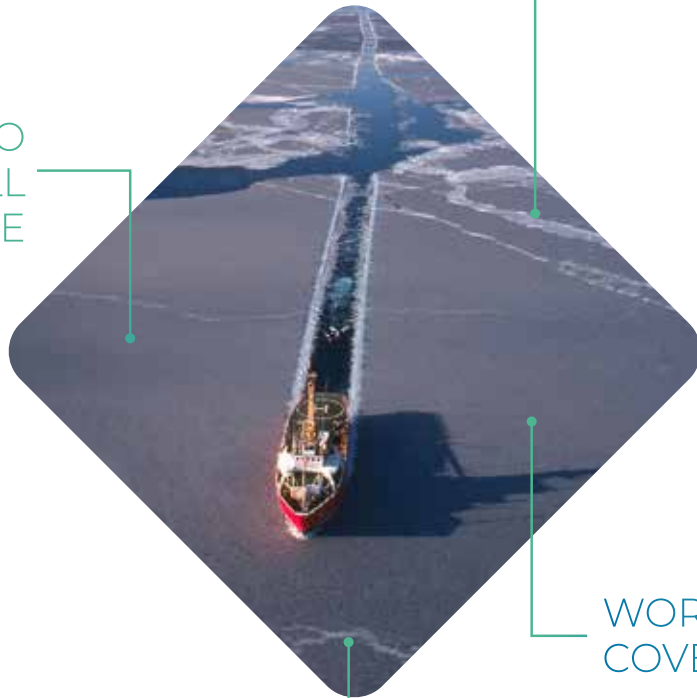
SSAS for Arctic Sea routes



# Shiploc: Your Turnkey SSAS System for Worldwide Operations

CONFIGURABLE FLEET  
MANAGEMENT TOOL

EASY TO  
INSTALL  
DEVICE



WORLDWIDE  
COVERAGE

INTUITIVE WEB  
PLATFORM  
FOR FLEET  
MONITORING

## Addressing the Challenges of Arctic Navigation

Vessels require reliable tracking and ship security alerting systems, wherever they choose to operate in the world. With the opening up of the North Sea Route and the new Polar Code, more and more vessels are venturing into the Arctic region. Relying on its proven track record in these areas, CLS developed Shiploc Arctic to offer its customers the most effective certified SSAS system with a contained price.

### Shiploc, IMO compliant

Shiploc uses the Iridium satellite constellation to give truly worldwide coverage, including the Polar Regions. CLS' Shiploc terminal is compliant with the SOLAS XI-2/6 IMO regulation and has been designed to operate in harsh environment.

### Shiploc, your day-to-day partner for SSAS alert management

With Shiploc Arctic, there is no limit to the number of alerts recipients: you can customize it indefinitely. Which means, there is no need for a technician to go aboard to correct a misspelled email address: Shiploc.com gives you control. With Shiploc, you have the freedom to manage incidents, start tests or respond to alerts from any device, anytime, anywhere. Using Shiploc, you can customize test profiles and test notifications to comply with your company's security policies and best practices.

**Shiploc** terminal specially designed for harsh environment including Arctic sea routes



# SHIPLOC TECHNICAL SPECIFICATIONS



## CONNECTIVITY

- Iridium patch antenna
- GPS patch antenna
- Internal cellular antenna



## SHIPLOC PACKAGE CONTENT

- Dome
- Control box
- Alert buttons



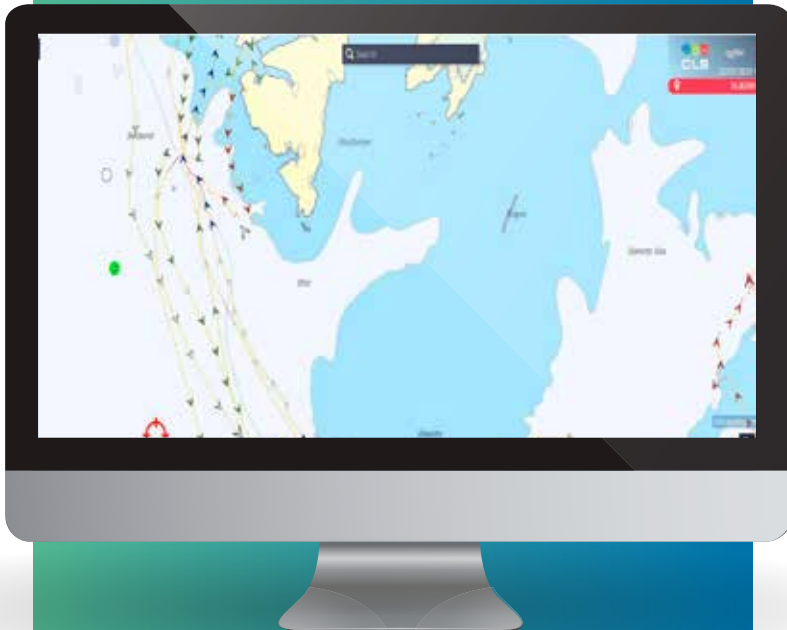
## OTHER BENEFITS

- Internal battery - up to 72h
- Autonomy without power supply
- Up to 6-months internal data storage



## CERTIFICATION

- Type approval by Bureau Veritas
- Ip67



New [Myshiploc.com](http://Myshiploc.com)  
web interface



# CLS

CLS (Collecte Localisation Satellites) is a worldwide company and has been a pioneer provider of monitoring and surveillance solutions for the Earth since 1986. Our mission is to provide innovative space-based solutions to understand and protect our planet and to manage its resources sustainably.

**30** million positions processed daily

**100 000** satellite beacons tracked

**7/24/365** operational data center

## WORLDWIDE NETWORK

**26** locations

**5** continents

**720** people



### SHIPLOC, YOUR COMPLETE SHIP SECURITY ALERT SYSTEM

CLS has been providing SSAS services to the global maritime community since 1998 and has established itself as one of the most reliable SSAS system on the market. Our dedicated and experienced service delivery team are on hand to provide you with expert support and guidance. Shiploc provides you with peace of mind, reliably protecting your crew and your vessel, wherever they may be.



[maritime-surveillance@groupcls.com](mailto:maritime-surveillance@groupcls.com)



[maritime-intelligence.groupcls.com](http://maritime-intelligence.groupcls.com)

